

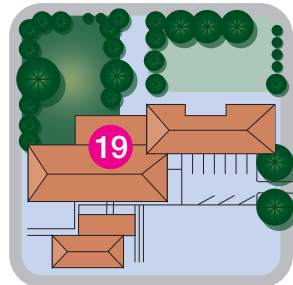
SITE MAP



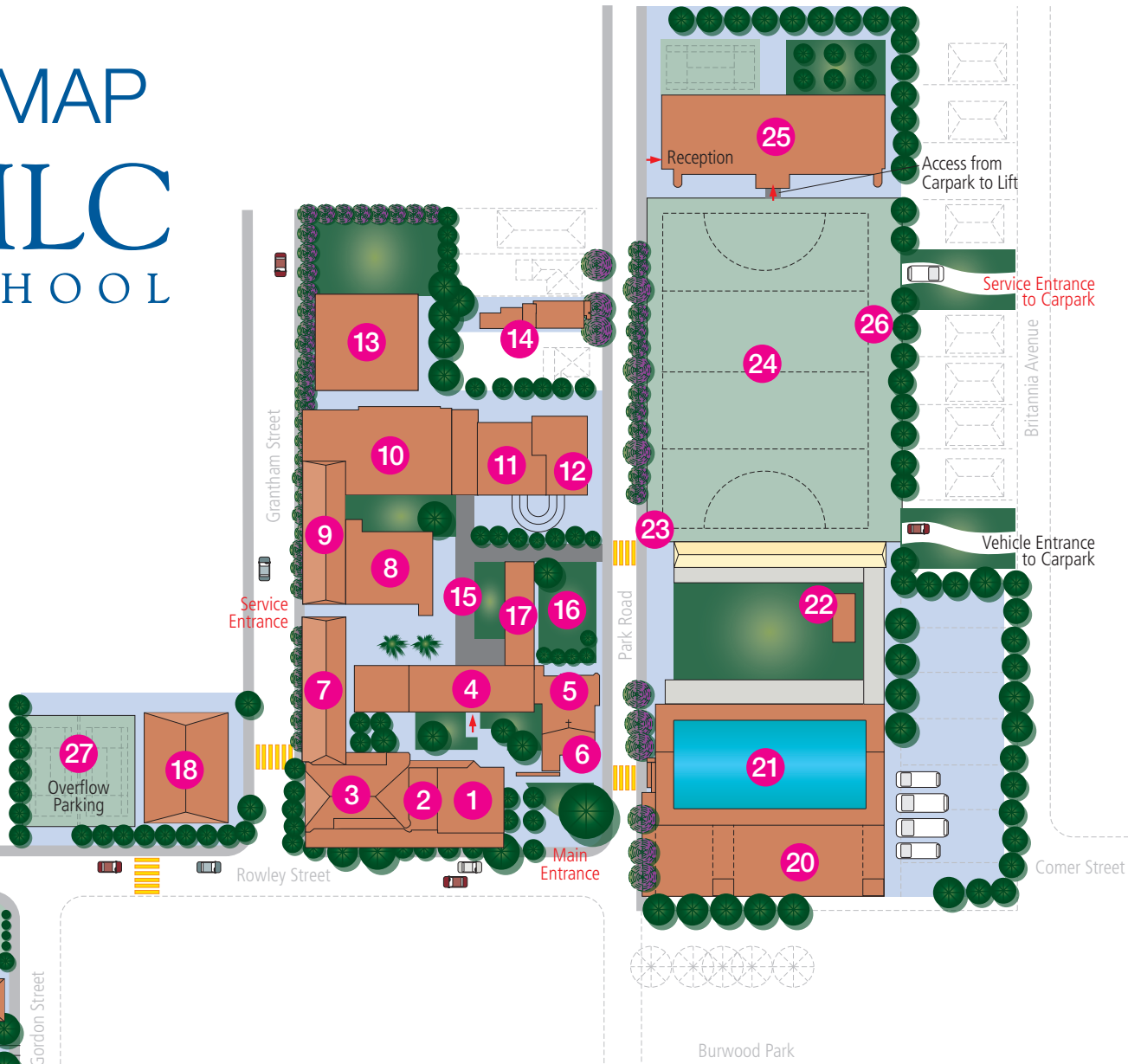
MLC SCHOOL

STREET ADDRESS:
MLC School
Rowley Street,
Burwood NSW 2134

POSTAL ADDRESS:
MLC School
PO Box 643
Burwood NSW 1805



For Archdale, please proceed to Kent House (no. 19)



LEGEND

- 1. Drama Theatre, Design and Technology
- 2. Clothing Shop
- 3. **GROUND FLOOR**
Admissions, Community Relations, Counsellors
- FIRST FLOOR**
Potts Hall
- 4. **GROUND FLOOR**
Senior School Reception, Administration,
Principal's Office and Nurse
- FIRST FLOOR**
Visual Arts, Staff Study
- 5. Sutherland Rooms, Schofield Tower – Staff Rooms
- 6. Chapel
- 7. **GROUND FLOOR** **FIRST FLOOR**
Hospitality History
- 8. Independent Learning Centre and Library
- THIRD FLOOR**
Ailsa Butcher Room
- 9. **GROUND FLOOR**
TAS, Language Lab
- FIRST FLOOR**
Science Lab, Dance Studio
- 10. **GROUND FLOOR**
Enlightenment Centre
- FIRST FLOOR**
Science Laboratories
- 11. **GROUND FLOOR** **FIRST FLOOR**
English Maths
- 12. **LOWER GROUND FLOOR** **GROUND FLOOR**
Canteen Classrooms
- FIRST FLOOR** **SECOND FLOOR**
Social Science Tower Viewing Area
- 13. Middle School – Year 6 Centre
- 14. Speech and Drama
- 15. Covered Walkways
- 16. Principal's Lawn
- 17. **GROUND FLOOR** **FIRST FLOOR**
Staff Common Room Staff Study
- 18. Centenary Music Centre
- 19. Kent House Visual Arts Centre and Gallery
- 20. Gymnasium and Sports Department
- 21. Aquatic Centre
- 22. Field Classrooms
- 23. Pedestrian Entrance to Underground Carpark
- 24. Hockey Field
- 25. Junior School **THIRD FLOOR**
Daphne Line Hall
- 26. Sprint Track
- 27. Tennis Courts

This is current information at December, 2012.